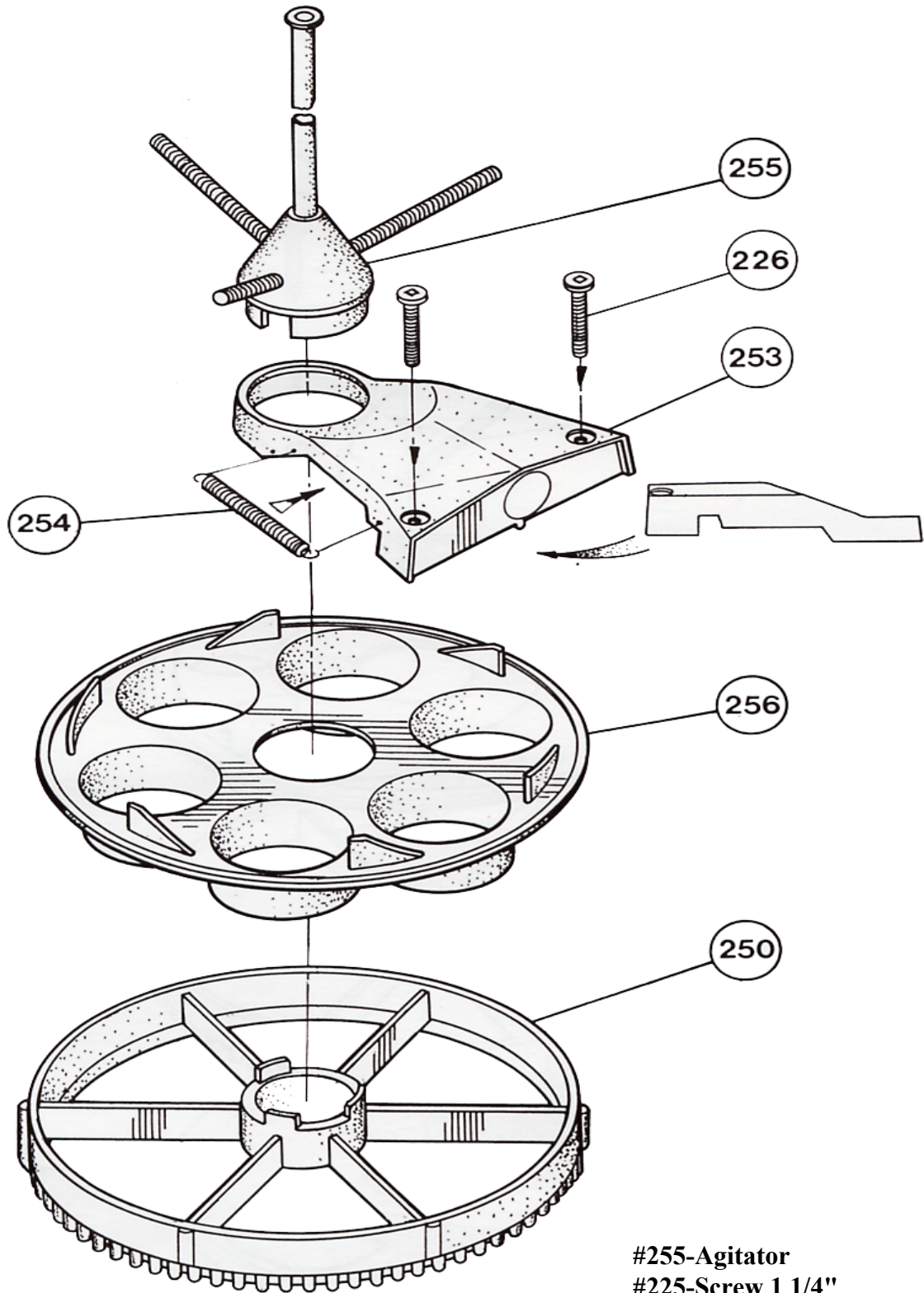


CAPSULE CONVERSION

CB



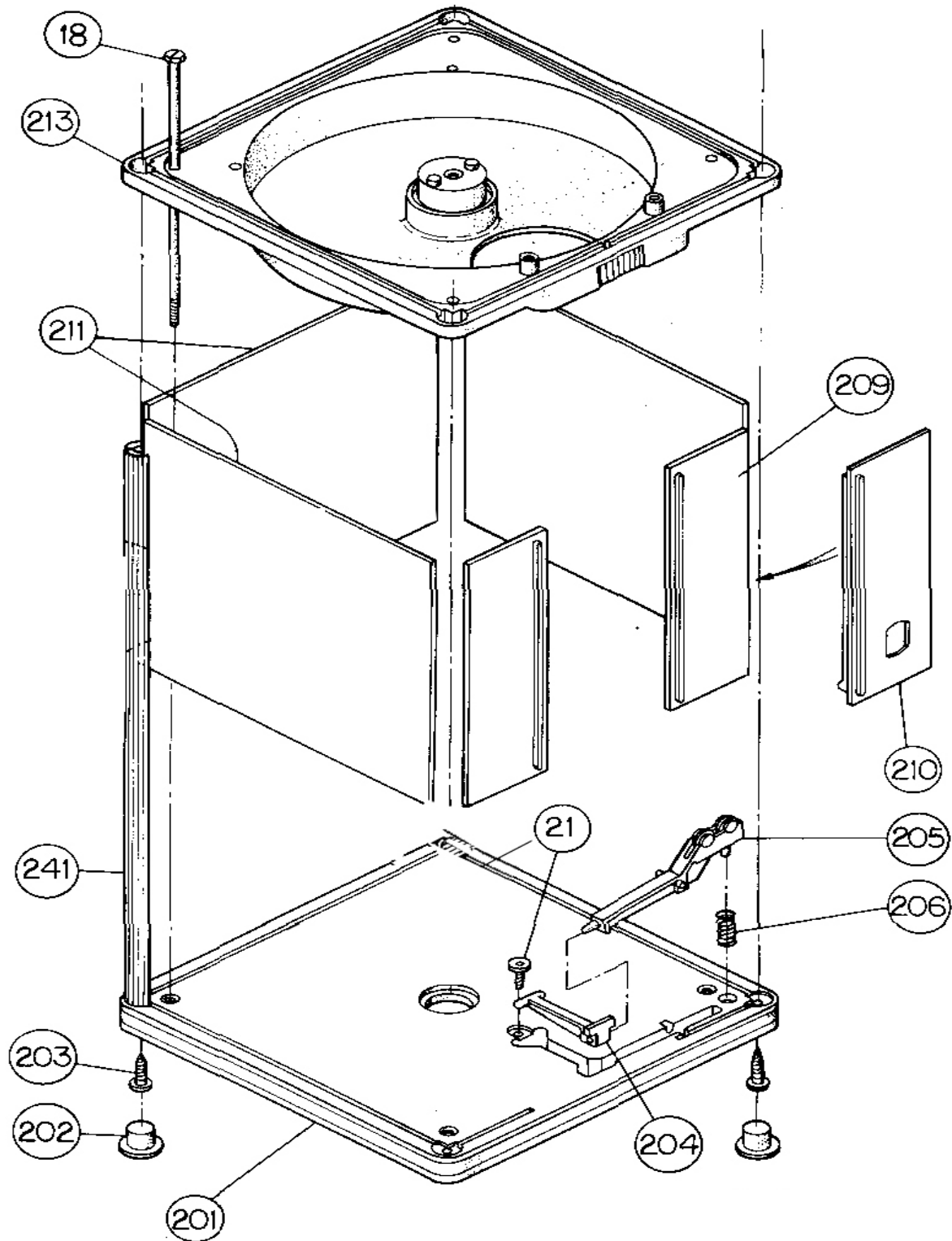
- #255-Agitator
- #225-Screw 1 1/4"
- #253-Capsule housing
- #254-Spring for housing
- #256-Capsule disc
- #250-Dispensing wheel



Beaver ® is a registered trademark of Machine-O-Matic Limited, Newmarket, Ontario

Figure 1

NB LOWER MACHINE SECTION DETAIL



#18-Side rod
 #213-Hopper
 #211-Panel
 #241-Corner posts
 #203-Corner post screw
 #202-Feet
 #201-Base
 #204-Cash door hook

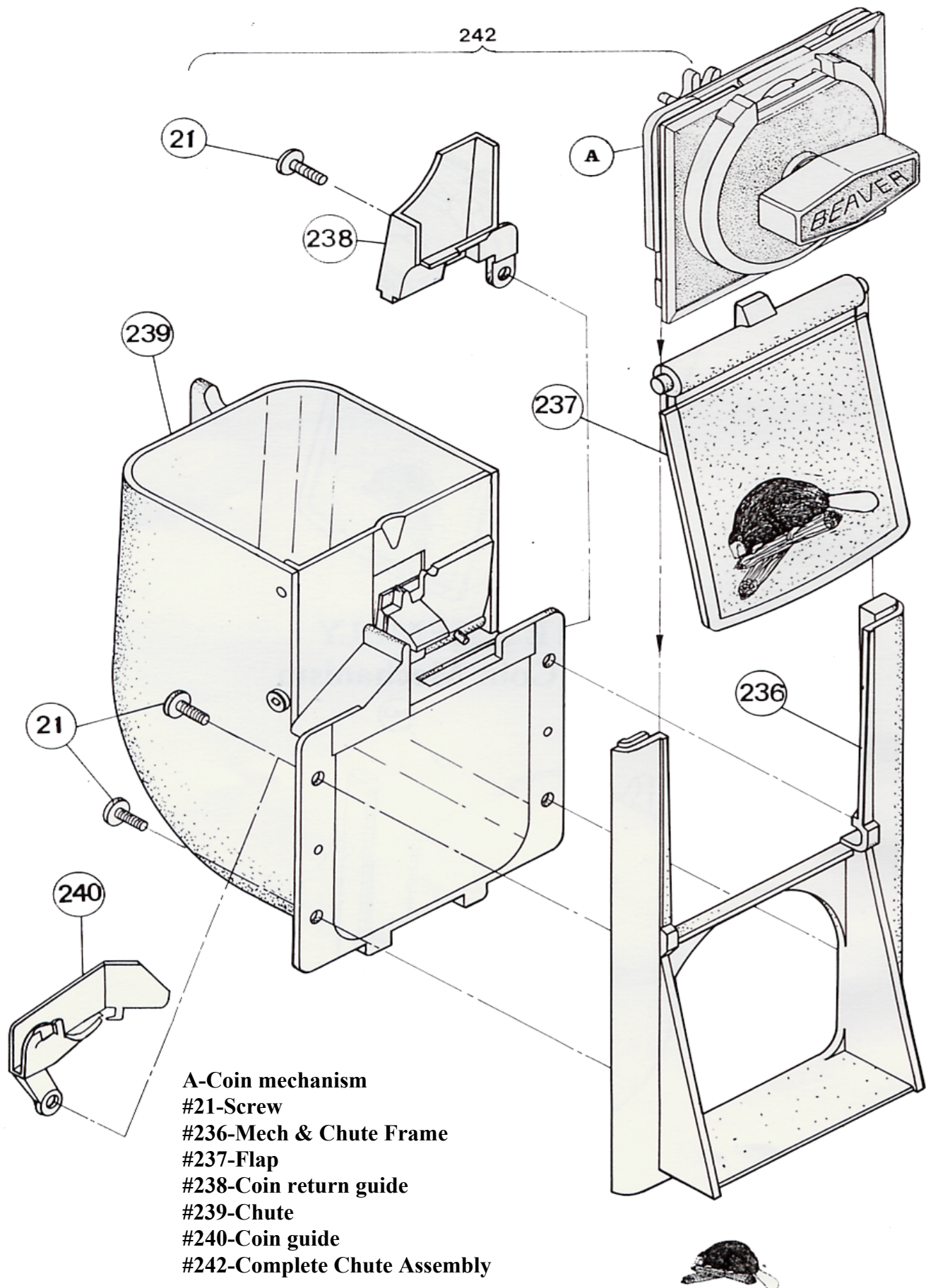
#206-Spring roller lever
 #205-Roller lever
 #210-Front right panel
 #209-Front left panel
 #21-Screw 1/2"



Beaver ® is a registered trademark of Machine-O-Matic Limited, Newmarket, Ontario

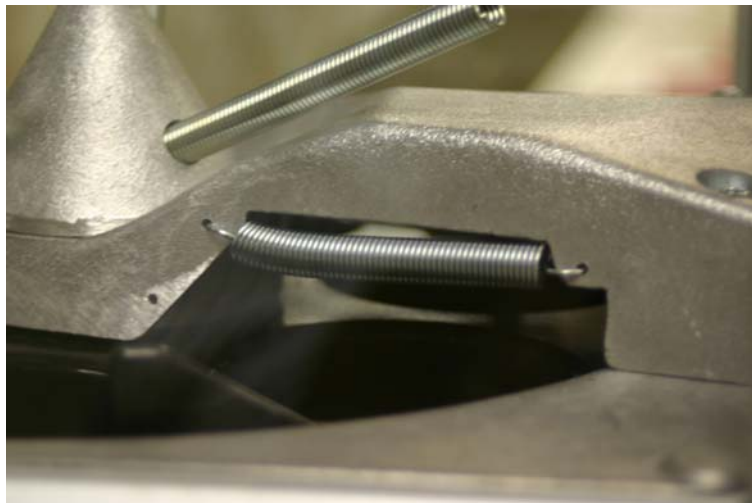
Figure 2

CHUTE ASSEMBLY DETAIL



Beaver® is a registered trademark of Machine-O-Matic Limited, Newmarket, Ontario

Figure 3



Brush off spring position, Phase I units only

Figure 4



Proper brush off spring position to properly dispense 45mm, 49mm and 2" capsules.

Figure 5



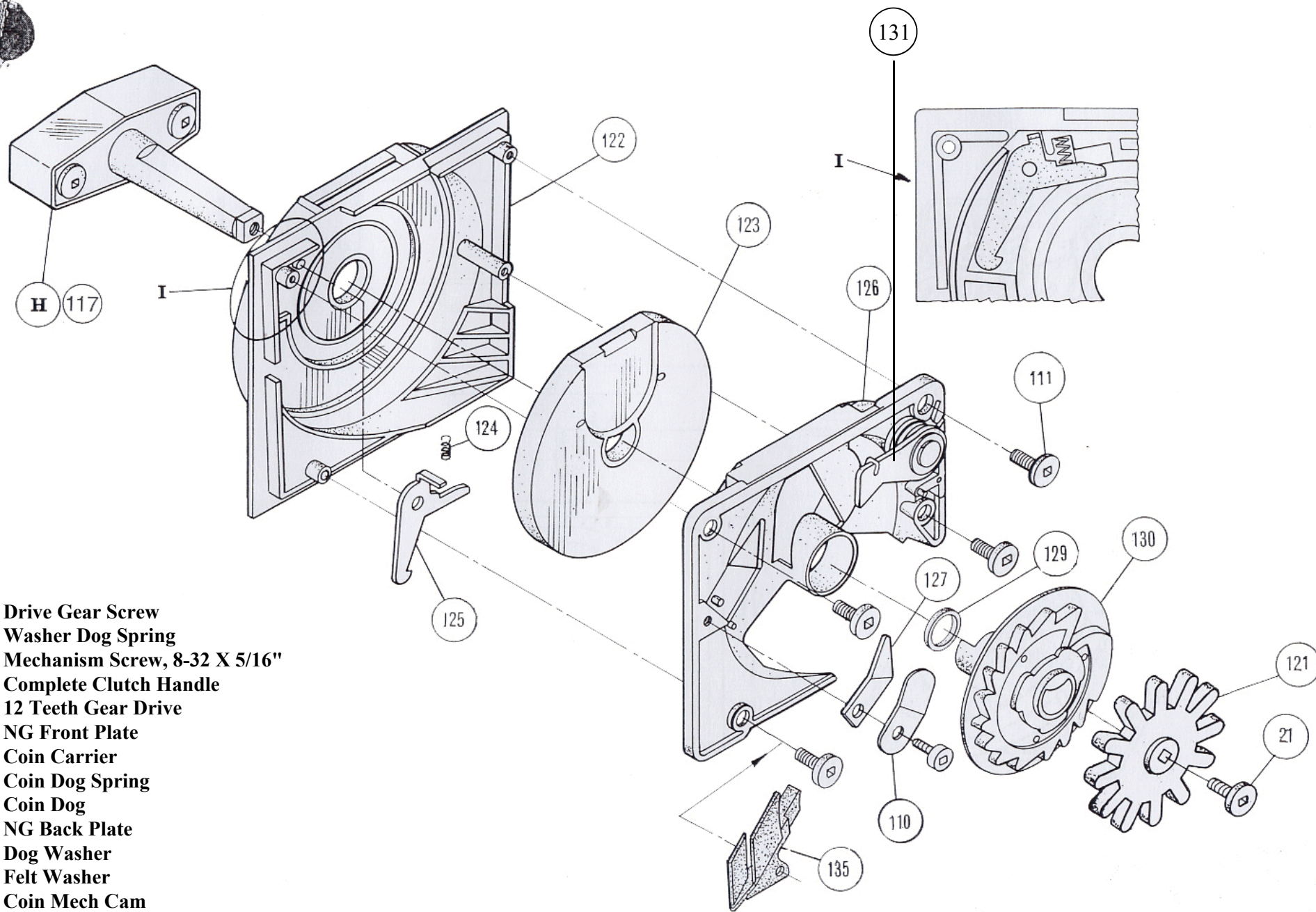
Proper Dispensing Timing

Figure 6



Improper Dispensing Timing

Figure 7



- #21 Drive Gear Screw
- #110 Washer Dog Spring
- #111 Mechanism Screw, 8-32 X 5/16"
- #117 Complete Clutch Handle
- #121 12 Teeth Gear Drive
- #122 NG Front Plate
- #123 Coin Carrier
- #124 Coin Dog Spring
- #125 Coin Dog
- #126 NG Back Plate
- #127 Dog Washer
- #129 Felt Washer
- #130 Coin Mech Cam
- #131 Ratchet Dog Spring
- #135 Slug Diverter

FIGURE 8